

Eclipse Testpod TRUCK Software 2010 Release 1

The first update of 2010 and the largest so far with additional models and wider database coverage for both car and truck. In addition to improvements in functionality is a focus on user-friendliness - available end of March. We'll contact affected customers.

New program functions

Save/print out data lists

It is now possible to save and easily print out data lists in both graph and list modes together with, for example, error codes. By clicking on the Camera button in the data list the current list or graph is added to the report function. There you can choose to add information to the report, which is saved or printed out.

Personal logo on reports

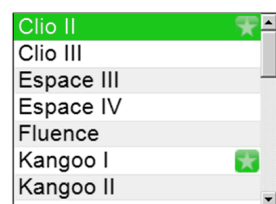
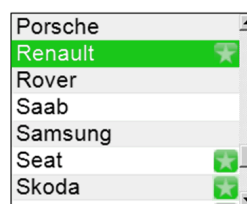
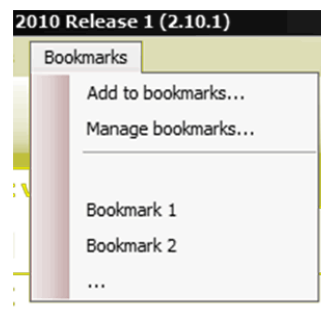
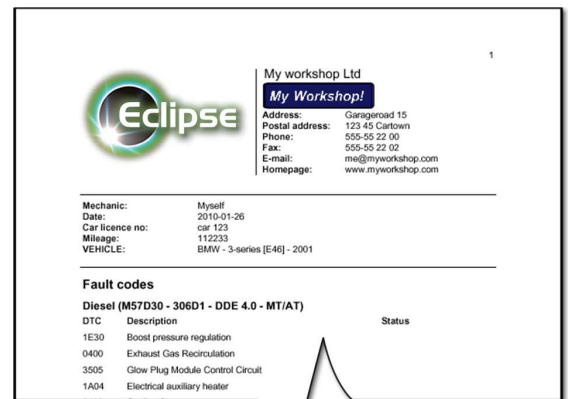
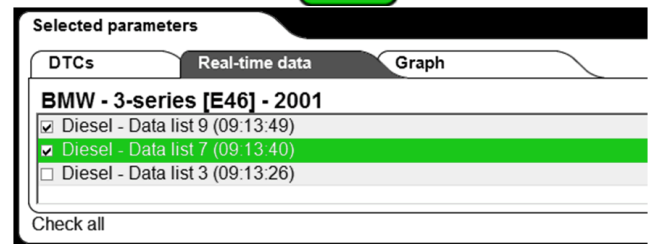
It is now possible to add your own image in the function to print out or save the report. By adding a jpg-image in the workshop information in the program your own image is added to both printed out and saved reports.

Bookmarks

In the file menu a function has been added to save the current choice of car. This is to enable a quicker return to a car or a system. The user gives each bookmark a name which is shown in the bookmark menu list. When a bookmark is selected the car choice is done automatically.

Markers for new items

To show what is new or updated the manufacturer has a star as a marker and by clicking on model → year → system, you can see exactly what has been added in this release. The function can of course be turned on and off, this is done in the File menu.



Heavy commercial vehicles

DAF

DAF Models/years LF 45/55 –40-08, CF 65/75/85 -04 –08 and XF 105 –06 –08.

Updated with functions to read out and enter service parameters.

Models/years CF 75/85 and XF 105 –06 –08.

Updated with four new functions on engine: compression test, automatic test of cylinders, injector programming and programming of unit pump.

Models/years CF 01 08 and XF 95 –01 –06.

It is now possible to calibrate level sensors on the trucks.

Mercedes

Updated models/years Actros–97 –02 /Actros MP II –02 –09.

All Actros models are updated with new functions on the engine, cylinder balancing, resetting of cylinder balancing, injection period and unit pump programming.

Drive control FR (FR3, CPC0) is updated with new activations.

The gearbox also has a new function, a major programming of GS control unit for the gearbox.

Updated models/years Atego –98 –03 /Atego II –04 –09.

All Atego models are updated with new functions on the engine. Cylinder balancing, resetting of cylinder balancing, injection period and unit pump programming.

Drive control FR (FR3, CPC0) is updated with new activations.

Atego –98 –03 has a new function, a major programming of GS control unit for the gearbox.

In addition on Atego II there will be reading of error codes and reading of data lists on brakes (ABS1) and secondary steering (EHZ).

Updated models/years Axor –01 –03 /Axor II –04 –09.

All Axor models are updated with new functions on the engine. Cylinder balancing, resetting of cylinder balancing, injection period and unit pump programming.

Drive control FR (FR3, CPC0) is updated with new activations and calibration functions.

The gearbox also has a new function, a major programming of GS control unit for the gearbox.

In addition on Axor II there will be reading of error codes and reading of data lists on brakes (ABS1) and secondary steering (EHZ).

Updated models/years Econic–98 –04 / Econic II –05 –09.

All Econic models are updated with new functions on the engine. Cylinder balancing, resetting of cylinder balancing, injection period and unit pump programming.

Drive control FR (FR3, CPC0) is updated with new activations and calibration functions.

The gearbox also has a new function, a major programming of GS control unit for the gearbox.

In addition on Econic II there will be reading of error codes and reading of data lists on brakes (ABS1) and secondary steering (EHZ).

Scania

An overview has been done on Scania and updates have been carried out to improve communication on a number of systems for several models.

IVECO

Updated model/years Stralis-02 -07/-07 -09.

On Stralis the Abs Wabco D / E / E2 brakes have been updated and a new system called Ebs/Ebs 2 has been added.

From -07 -09 the engine Edc 7 UC31 has also been updated and Denoxtronic 2 has been added as a new engine.

Trailer

Knorr

Increased functionality for TEBS with service programming.

A new brake system KB4TA has also been added.

The existing system has been examined and improved for better diagnostic possibilities.

Light commercial vehicles

Fiat

Doblo -06-08 updated with service deactivation/reset of service indicator.

Ford

Updated models/years Transit 06-10, Transit Connect 02-10, Tourneo 02-10. Major update to cover up to models for 2010 with superb coverage of the cars' system.

Iveco

Daily 00-06 updated with diagnostics for 2.8L diesel engine, ABS and Automatic transmission.

Mitsubishi

L200 III -03-05 and L200 IV -07.

Models updated with diagnostics for the engine and the other systems. Many models have received the function for injector programming and steering angle programming.

Mercedes

Updated models/years Sprinter (903) -05, Sprinter (904) -05, Sprinter (905) -05, Sprinter (906) -10, Vito/Vivano (W639) 10. Major update with many new models/systems. Many models updated to cover models for 2010.

Nissan

Updated models/years Interstar -03-05 updated with diagnostics for SRS, ABS and diesel engine.

Opel/Vauxhall

Updated models/years Antara -07-10, Astra H -07-10.

A number of new diesel engines have been added on the Astra H.

Peugeot

Updated models/years Bipper -08-10, Partner Series 2 -08-10, Boxer and series 3 -06-10.

A major update with new models and systems and in-depth diagnostic functions, for example, brake bleeding function, steering angle calibration, resetting of the service indicator and more.

Renault

Updated models/years Clio II 04-08, Kangoo I 04-08.

An update with many new systems and updates of existing systems with in-depth functionality, for example, programming automatic locking, reading configurations and programming injectors.

Volkswagen

Updated models/years Caddy III -03-09, Crafter -10, T5 04-09. Updated with in-depth diagnostic functionality. New function to erase error codes in all systems, the function is found in the group "multi-functions/quick service" together with the system status gateway where it is now possible to quickly read out all the cars' systems and all systems can also be erased.