



## Start screen

Information to end user that he/she must activate the software.

This guide, will appear after installation has finished and the 'first time setup' is completed.

The guide will start every time until the user has activated the diagnostic software. After the diagnostic software has been activated it will be valid until the next release has been installed.



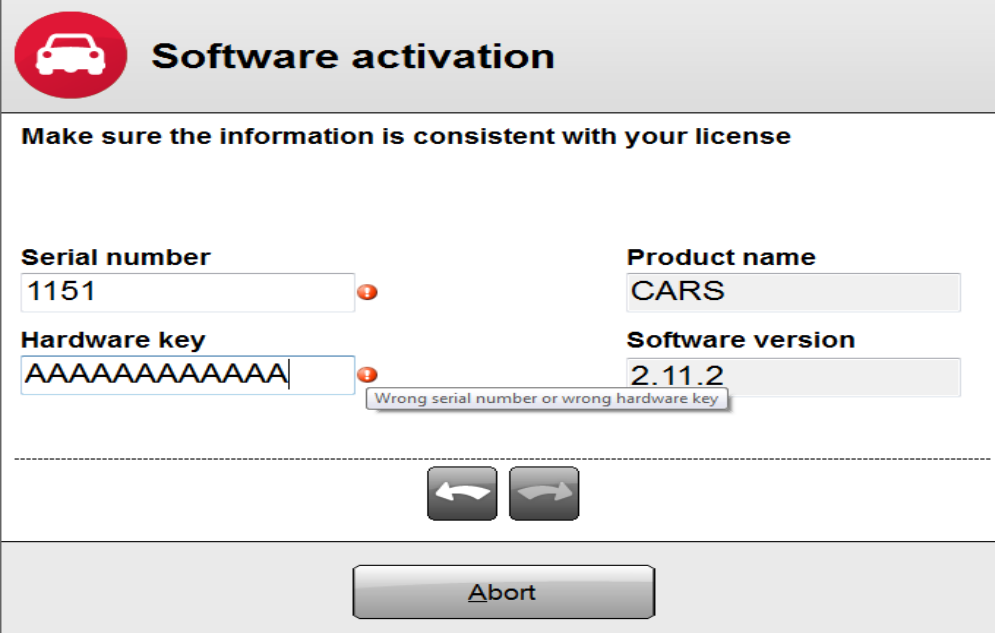


## Serial number and hardware key

The user must enter his/her valid serial number and hardware key combination.

No matter which one is wrong, both are marked as faulty if the combination is not valid.

The user cannot proceed with the wizard until correct information has been entered.

A screenshot of a software activation dialog box. The title bar contains a red car icon and the text "Software activation". Below the title bar, the instruction "Make sure the information is consistent with your license" is displayed. The form has four input fields: "Serial number" with the value "1151", "Product name" with the value "CARS", "Hardware key" with the value "AAAAAAAAAAAA", and "Software version" with the value "2.11.2". Red error icons are present next to the "Serial number" and "Hardware key" fields. A tooltip message "Wrong serial number or wrong hardware key" is shown below the "Hardware key" field. At the bottom of the dialog, there are two navigation arrows (back and forward) and an "Abort" button.

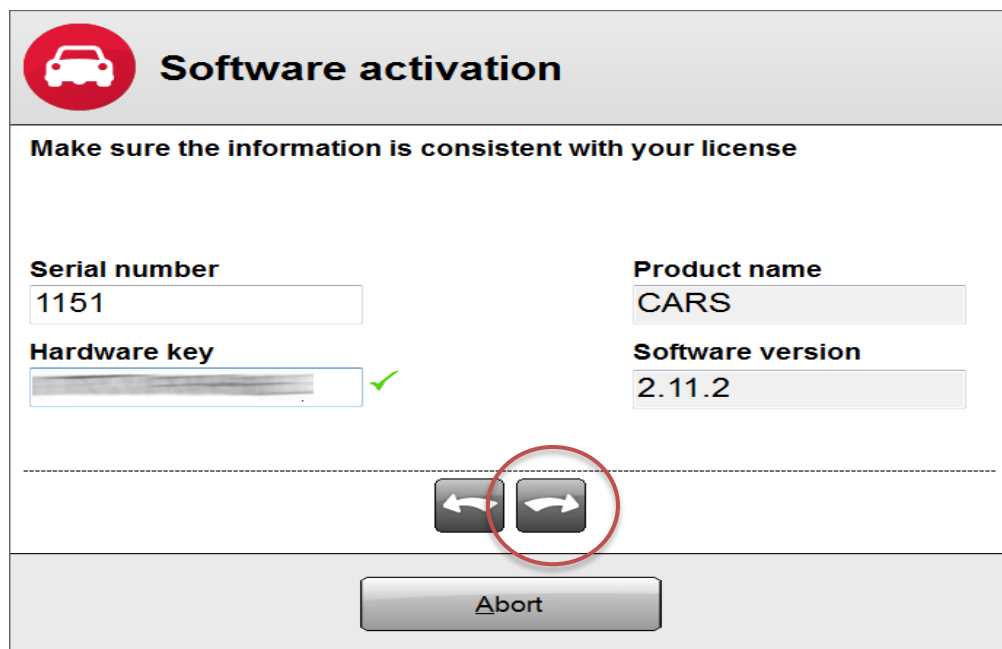
Field	Value	Status
Serial number	1151	Invalid
Product name	CARS	Valid
Hardware key	AAAAAAAAAAAA	Invalid
Software version	2.11.2	Valid



## Correct information provided

When the user has entered correct information, he/she is allowed to proceed with the wizard.

Note that the serial number and hardware key entered during the installation are used here, so if user has entered them correctly in the first place, he will be able to proceed immediately.



The image shows a "Software activation" dialog box with a red car icon in the top left corner. The title bar reads "Software activation". Below the title bar, the text "Make sure the information is consistent with your license" is displayed. The dialog box contains four input fields arranged in a 2x2 grid:

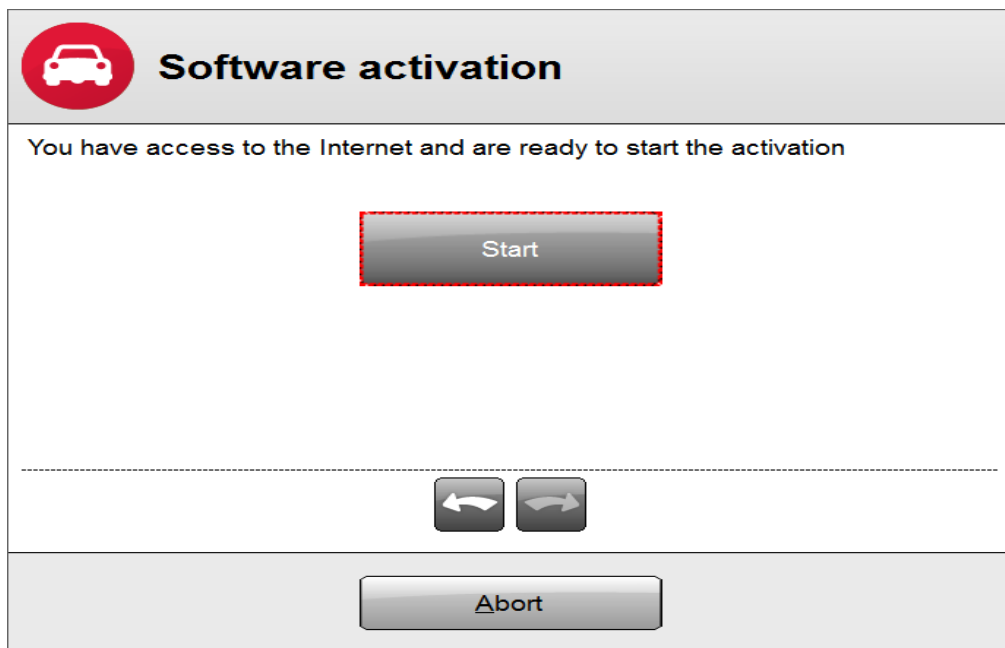
Serial number	Product name
1151	CARS
Hardware key	Software version
[Redacted] ✓	2.11.2

At the bottom of the dialog box, there are two navigation buttons: a left arrow and a right arrow. The right arrow button is circled in red. Below these buttons is an "Abort" button.

Online

## Internet is available

An Internet connection could be established and the user can start the activation by pressing the "Start" button





Online

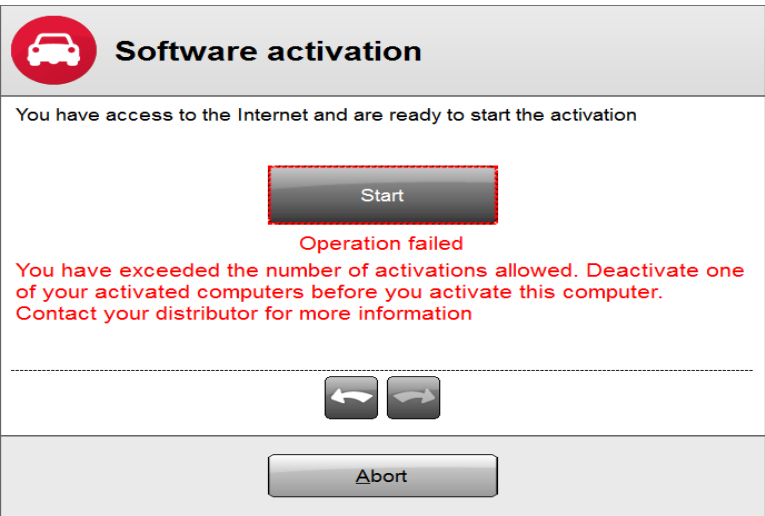
## Success

Within 1 minute the diagnostic software is started and the activation process is finished.

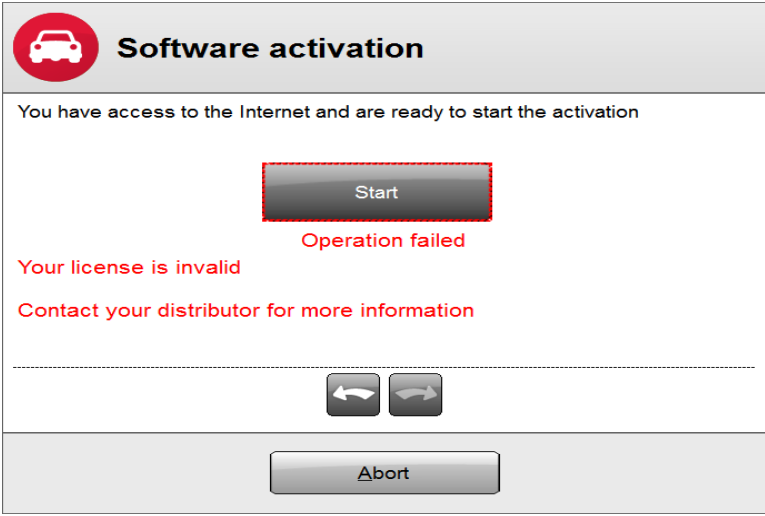
When the next release has been installed this procedure must be repeated for all computers.

### Possible failures

User has already activated on the maximum allowed number of computers (3)



License has not been activated by the distributor or it has expired.



## No Internet access?

- ❏ If the users cannot get Internet access on the computer, on which he wants to run the diagnostic software, he can use another computer to activate the diagnostic software. The other computer must have access to Internet.
- ❏ If the activation wizard cannot find a connection to Internet the wizard will give the user the possibility to activate with the help of an USB-memory stick.

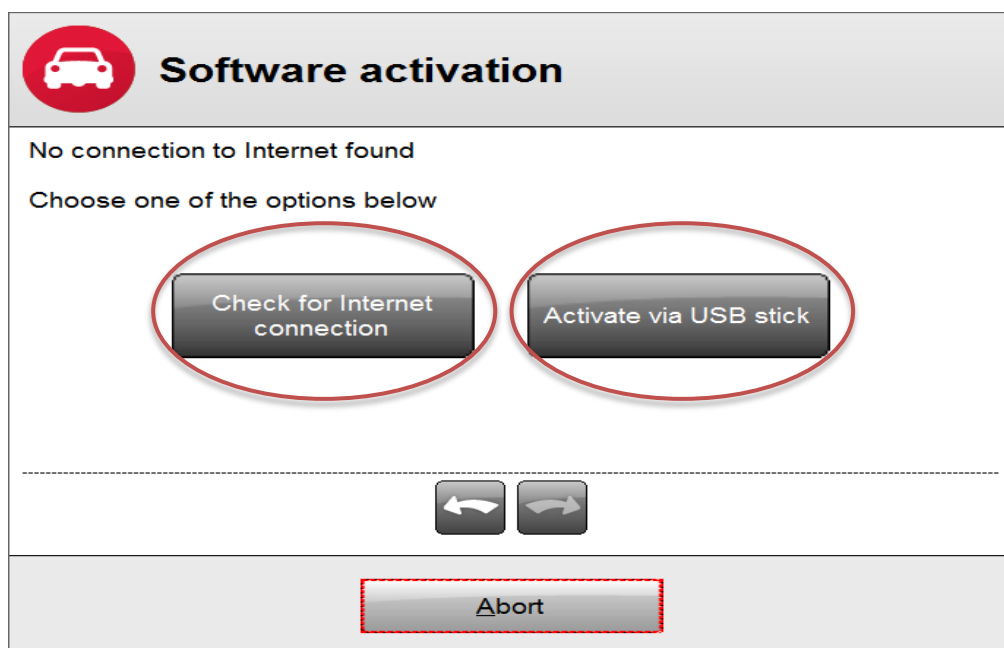
Offline

## No Internet connection

The guide didn't find an internet connection. If the user wants to try to open the internet he/she can retry by pressing the left button "Check for Internet connection".

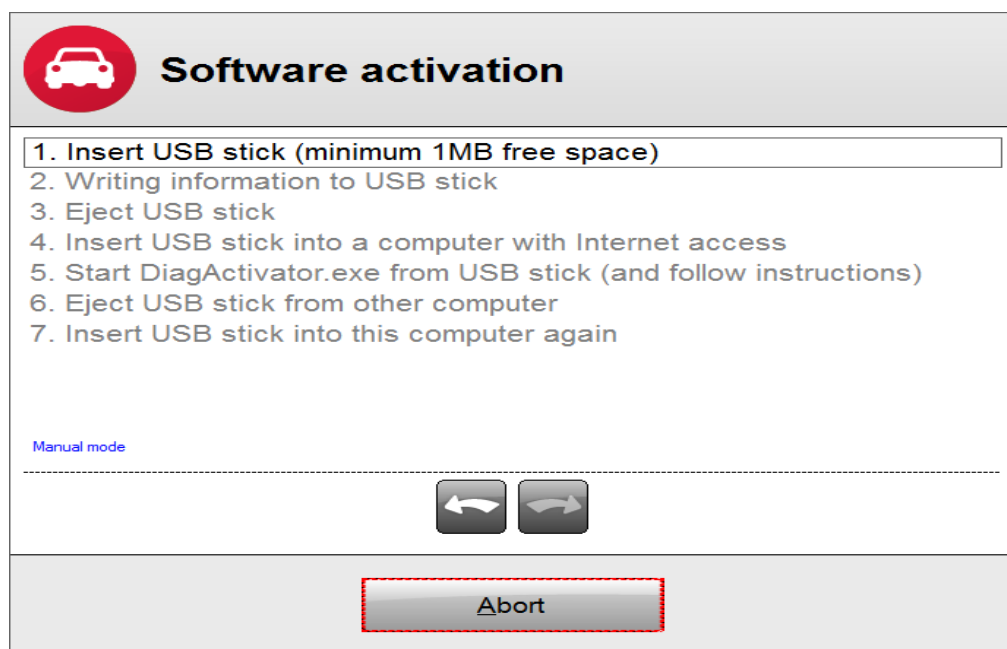
If internet connection should be possible, check cable connections or wireless settings on the computer.

The alternative is to start the USB-activation guide by pressing the right button "Activate via USB stick".



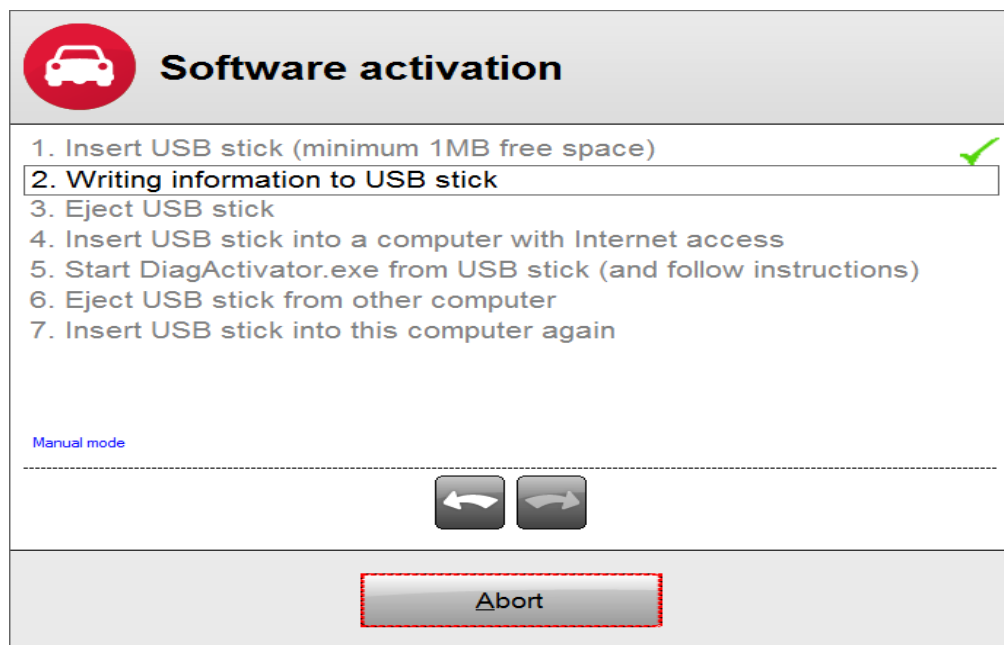
## USB activation guide

- 1. Insert a USB-memory stick with at least 1 MB free space.
- 2. The product activation will automatically recognize the USB-memory stick.




Offline

- The product activation guide writes information to the USB-memory stick.
- When it is finished the next step will be highlighted.



Offline

- Information and an application to run the product activation is copied to the USB-memory stick.
- It is ready to be moved to the computer with internet access.



### Software activation

1. Insert USB stick (minimum 1MB free space) ✓
2. Writing information to USB stick ✓
3. Eject USB stick
4. Insert USB stick into a computer with Internet access
5. Start DiagActivator.exe from USB stick (and follow instructions)
6. Eject USB stick from other computer
7. Insert USB stick into this computer again

Manual mode

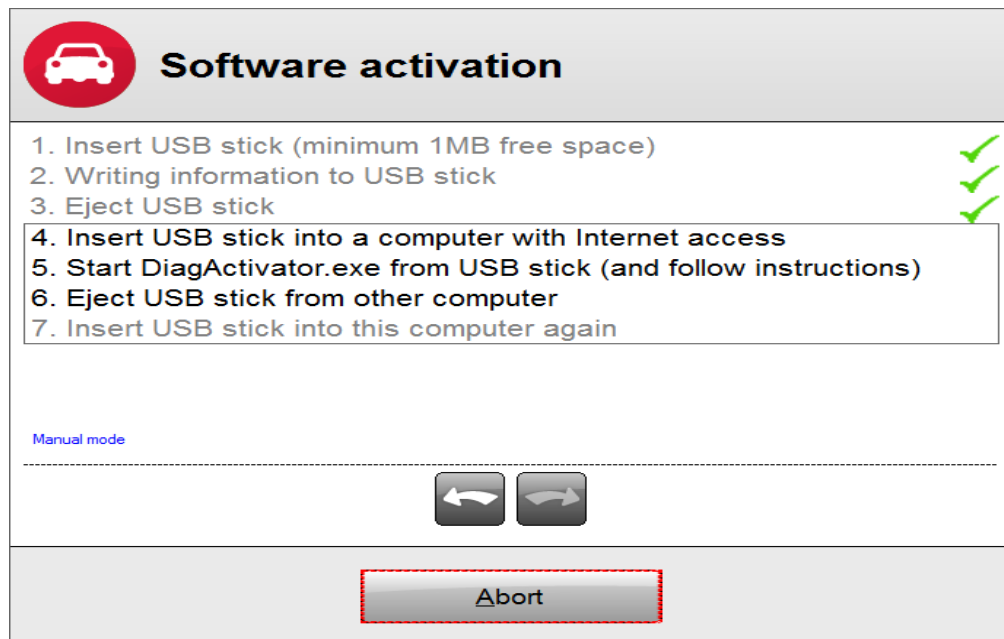
← →

Abort

Offline

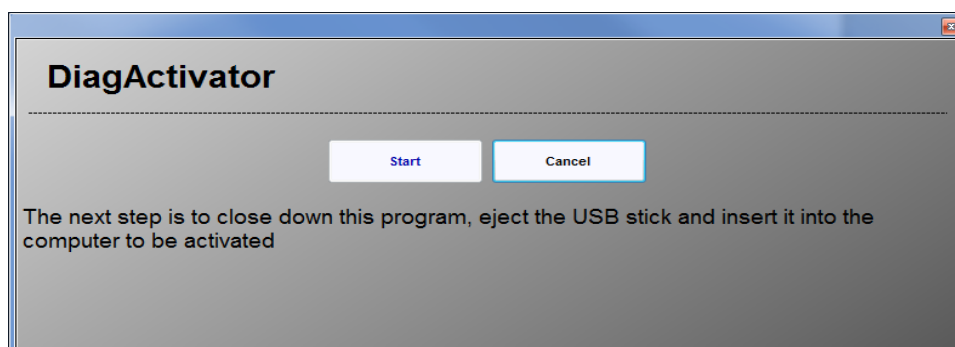
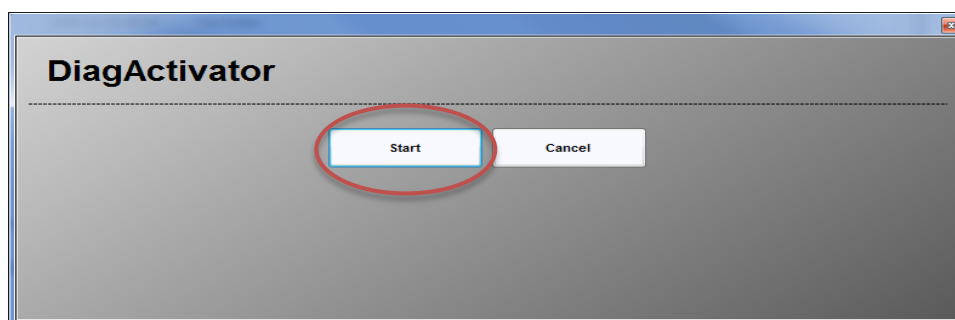
- ❶ The user moves the USB-memory stick to the computer with internet access.
- ❷ Now a software have to be started manually\* on this computer.
- ❸ Explore the USB-memory stick to find the software.

\* Automatic launch of program files (.exe) is prohibited by the operating system.



## DiagActivator

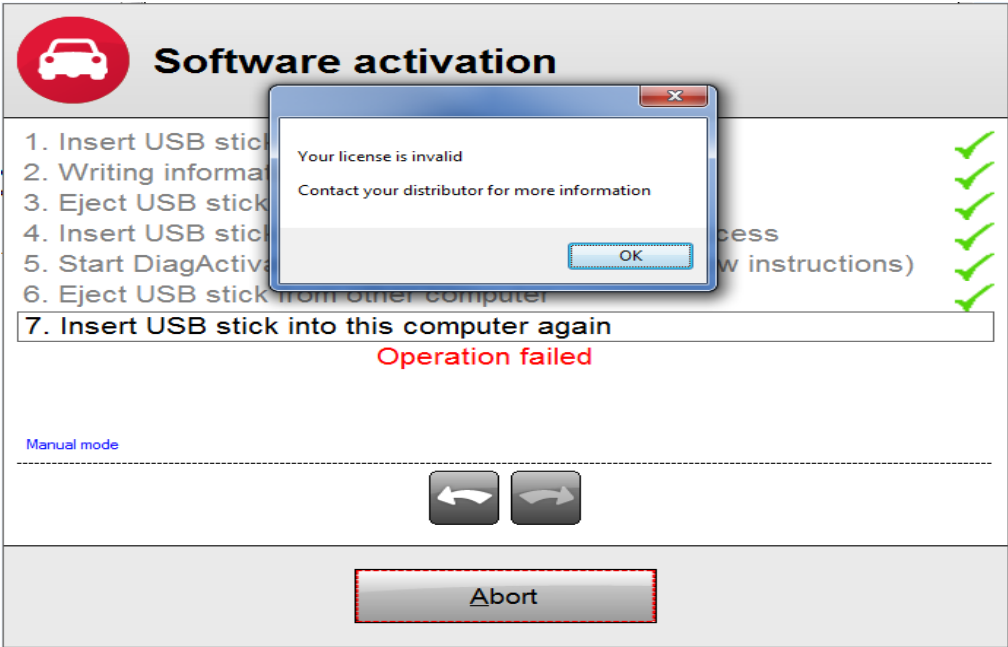
- An external application must be started on the computer with Internet access.
- It is called DiagActivator.exe and is found in the root directory of the USB-memory stick.
- The user simply press the “Start” button and waits for less than a minute.
- Exit the application and move the USB-memory stick back to the computer with the diagnostic software installed.



## Reinserting the USB-stick

When the user inserts the USB-memory stick into the computer with the diagnostic software installed the activation guide will be finished and the diagnostic software will start.

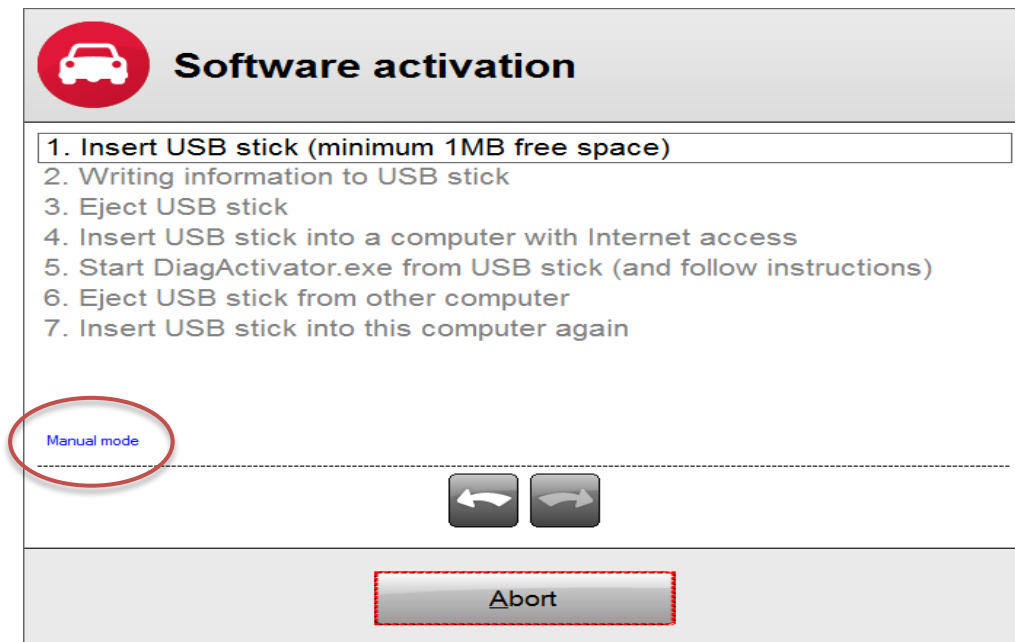
If the product activation is failed a window will show the cause of failure. The same type of errors can appear as with the online product activation.



## Manual mode

It is possible to do the file based activation without a USB-memory stick. This can be done in "Manual mode". In this case the user can save the external activation application on any writable area, such as an SD-card, local intranet or even a floppy disk.

The user can reach this mode at the first step of the USB activation guide.



Offline

The “Save file” button will open a file browser in which the user can select a folder to store the DiagActivator.exe and the information file.

When the user has done so he can start DiagActivator there – run it – and then choose ‘Open file’ and point to the directory where DiagActivator (and relevant files, “FileActivation.xml”) is stored.

The manual mode shall be considered as a last option if other options fails due to no Internet access and no USB-ports on the computer.

